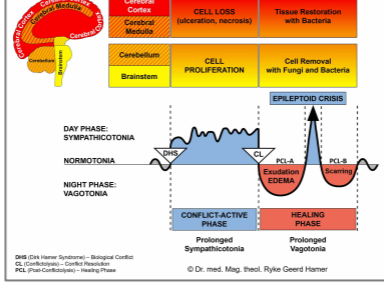




BIOLOGICAL SPECIAL PROGRAMS

OVERVIEW

written by Caroline Markolin,
Ph.D.



Organs controlled from the Brainstem

Organs controlled from the Midbrain

Organs controlled from the Cerebellum

Organs controlled from the Cerebral Medulla

Organs controlled from the Cerebral Cortex

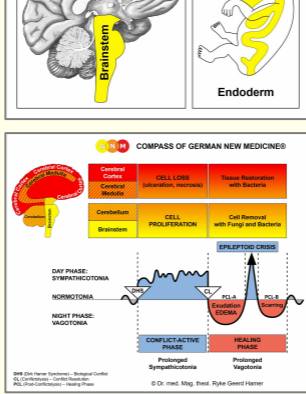
Organs controlled from the Cerebral Cortex with functional changes or functional loss

Organs controlled from the Cerebral Medulla and the Motor Cortex

Organs controlled from the Diencephalon

Rev. 1.07

ORGANS CONTROLLED FROM THE BRAINSTEM



ORGAN

BIOLOGICAL CONFLICT

MEDICAL CONDITIONS

Pituitary gland (adenohypophysis)

1. morsel conflict

– right side: not being able to grab a morsel because the individual is too small

– left side: not being able to get rid of a morsel because the individual is too small

2. not being able to nourish the child or the family

gigantism, acromegaly, intrauterine growth retardation, dwarfism, prolactinoma, galactorrhea, premature development, delayed puberty

Pineal gland

sudden long darkness

– right side: not being able to capture light

– left side: not being able to get rid of darkness

pineal tumor, pineal ependymoma, pineal cyst

Choroid plexus

1. morsel conflict

– right side: not being able to let a morsel “flow in”

– left side: not being able to let a morsel “flow out”

2. the brain is dry

choroid plexus ependymoma, hydrocephalus

Tear glands

conflict related to a visual morsel

– right side: not being able to catch a visual morsel

– left side: not being able to eliminate a visual morsel

lacrimal gland tumor, dacryoadenitis

Choroid**Iris****Ciliary Body**

conflict related to a visual morsel

– right side: not being able to catch a visual morsel

– left side: not being able to eliminate a visual morsel

choroid melanoma, iris melanoma, ciliary body melanoma, optic neuroma, coloboma, choroiditis, uveitis

Middle ear**Eustachian tubes**

conflict related to a sound morsel

– right side: not being able to catch a sound morsel

– left side: not being able to eliminate a sound morsel

middle ear infection, ear polyp, retracted eardrum, acoustic neuroma

Mouth and pharynx submucosa

morsel conflict

– right side: not being able to catch a morsel

– left side: not being able to eliminate a morsel

oral cancer, tongue cancer, nose polyp, nose abscess, tonsillar hypertrophy, tonsillitis, canker sores, thrush, mumps, Sjogren's syndrome

Lung alveoli

death-fright conflict

lung cancer, lung tuberculosis, lung edema, lung emphysema, pulmonary sarcoidosis

Goblet cells

fear of suffocating

mucoviscidosis, cystic fibrosis

Thyroid gland

morsel conflict

– right side: not being fast enough to catch a morsel

– left side: not being fast enough to eliminate a morsel

hyperthyroidism, hard struma, thyroid cancer, hypothyroidism

Parathyroid glands

morsel conflict

– right side: not being able to catch a morsel

– left side: not being able to eliminate a morsel

hyperparathyroidism, hypercalcemia, parathyroid cancer, hypoparathyroidism

Esophagus (lower third)

not being able or not being allowed to swallow a morsel

esophageal cancer, esophageal varices

Stomach (greater curvature)**Duodenum**

indigestible morsel conflict

upset stomach, stomach cancer, duodenal cancer

Liver parenchyma

starvation conflict

liver cancer, liver abscess, liver tuberculosis, liver cyst, hepatomegaly

Pancreas gland

indigestible morsel conflict

pancreatic cancer, pancreatitis

Small intestine

not being able to digest/absorb a morsel

jejunal cancer, ileal cancer, ileus, intestinal candidiasis, Crohn's disease

Colon

indigestible morsel conflict

colon cancer, intestinal polyp, intestinal candidiasis, appendicitis, Irritable Bowel Syndrome, colitis, diverticulitis

Sigmoid colon**Rectum submucosa**

feces conflict

colorectal cancer, rectal polyp, rectal abscess

Kidney collecting tubules

abandonment conflict, existence conflict, refugee conflict, hospitalization conflict

water retention, uremia, kidney cancer, kidney tuberculosis, nephritis, nephrotic syndrome, cirrhotic kidney, kidney stones

Adrenal medulla

unbearable intense stress

adrenal cancer

Bladder submucosa (trigone)

ugly, "dirty" morsel conflict

bladder cancer, bladder polyp, purulent tuberculous cystitis

Prostate gland

procreation conflict, sexual conflict, gender conflict

prostate cancer, prostate hyperplasia, prostatitis

Smegma secreting gland

not being able to penetrate a tight or dry vagina

penile candidiasis

Uterus**Fallopian tubes**

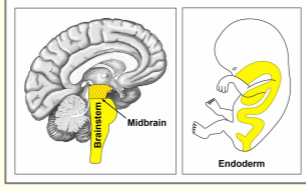
procreation conflict, implantation conflict, gender conflict

uterus cancer, uterine polyp, endometrial hyperplasia, endometritis, uterine candidiasis

Bartholin's glands

not being able to produce sufficient vaginal mucus

Bartholin's cyst, vaginal dryness

ORGANS CONTROLLED FROM THE MIDBRAIN**ORGAN****BIOLOGICAL CONFLICT****MEDICAL CONDITIONS****Pupil muscles**

light-related morsel conflict

myosis, mydriasis

Ciliary muscles (smooth)

not being able to see what is close

nearsightedness

Intestinal muscles

not being able to pass an indigestible morsel

intestinal colic

Sigmoid and rectal muscles (upper rectum)

feces conflict

rectal spasms

Internal anal sphincter

not being able to hold back feces

rectal spasms

Internal bladder sphincter

not being able to hold back urine

bladder spasms

Uterus muscles

not being able to hold the fetus

uterine fibroids

Female germ cells

profound loss conflict

ovarian teratoma, dermoid cyst

Male germ cells

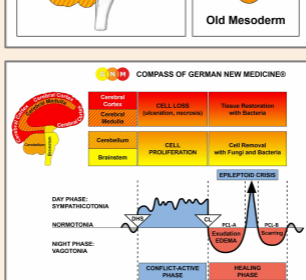
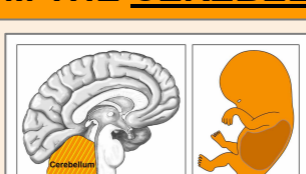
profound loss conflict

testicular teratoma, dermoid cyst

Myocardium (atria)

not being able to move the blood morsel

atrial fibrillation

ORGANS CONTROLLED FROM THE CEREBELLUM**ORGAN****BIOLOGICAL CONFLICT****MEDICAL CONDITIONS**

Myelin sheath

touch conflict

neurofibroma, von Recklinghausen's disease

Eyelid glands

attack against the eye, disfigurement conflict

stye, chalazion, eyelid tumor

Pleura

attack against the chest

pleural mesothelioma, pleurisy, pleural effusion

Peritoneum

attack against the abdomen

peritoneal mesothelioma, peritonitis, peritoneal effusion, ascites

Great omentum

ugly belly conflict

omental mesothelioma

Tunica vaginalis testis

attack against the testicles

testicular mesothelioma, hydrocele

Breast glands

nest-worry conflict, argument conflict

glandular breast cancer

Corium skin

attack conflict, disfigurement conflict, feeling soiled

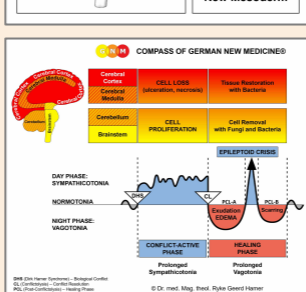
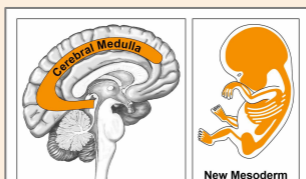
melanoma, skin tuberculosis, Kaposi sarcoma, leprosy, carbuncle, furuncle, pilonidal cyst, smallpox, shingles, acne, nail fungus, Athlete's foot

Pericardium

attack against the heart

pericardial mesothelioma, pericarditis, pericardial effusion, cardiac tamponade

ORGANS CONTROLLED FROM THE CEREBRAL MEDULLA



ORGAN

BIOLOGICAL CONFLICT

MEDICAL CONDITIONS

Ear Cartilage

self-devaluation conflict

perichondritis

Kidney parenchyma

water or fluid conflict

kidney cyst, kidney cancer

Adrenal cortex

having chosen the wrong path

Addison's disease, adrenal cyst, adrenal cancer, Cushing's syndrome, hirsutism

Testicles

loss conflict

testicular cyst, testicular cancer

Corpora cavernosa

self-devaluation conflict

erectile dysfunction, Peyronie's disease, phimosis, frenulum breve

Ovaries

loss conflict

ovarian cyst, endometriosis, ovarian cancer

Muscles (striated)

self-devaluation conflict

muscle atrophy, muscle necrosis

Connective tissue

self-devaluation conflict

fibroma, boil, keloids, scleroderma, Dupuytren's contracture

Fat tissue

self-devaluation conflict

lipoma, xanthoma, cellulite, cellulitis

Bones and joints

self-devaluation conflict

osteolysis, osteoporosis, arthritis, carpal tunnel syndrome, herniated disk, lumbago, sciatica, cervical spondylosis, scoliosis, kyphosis, lordosis, heel spur, bunion, gout, bone cancer, osteosarcoma, anemia, leukemia, plasmacytoma, hemochromatosis

Tendons

self-devaluation conflict

tendonitis

Cartilage

self-devaluation conflict

arthrosis, perichondritis

Dentin and jaw bones

bite conflict (not being able to bite)

cavities, periodontosis, tooth abscess, jaw cancer

Lymphatic vessels and Lymph nodes

self-devaluation conflict

lymphoma, lymphedema, mononucleosis, Pfeiffer's disease

Spleen

bleeding or injury conflict

splenomegaly, splenitis, splenic cyst

Blood vessels

self-devaluation conflict, ball-and-chain conflict

arteritis, atherosclerosis, arteriosclerosis, abdominal aneurysm, cerebral aneurysm, phlebitis, varicose veins

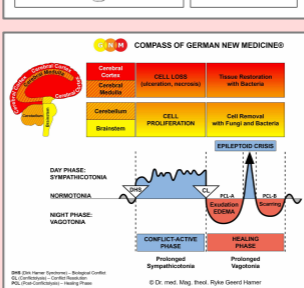
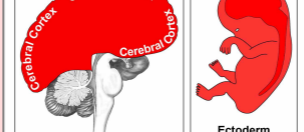
Endocardium

Heart valves

self-devaluation conflict

mitral insufficiency, mitral stenosis, aortic insufficiency, aortic stenosis, pulmonary valve stenosis, endocarditis

ORGANS CONTROLLED FROM THE CEREBRAL CORTEX



ORGAN

BIOLOGICAL CONFLICT

MEDICAL CONDITIONS

Excretory tear ducts

wanting to be seen, not wanting to be seen

dry eyes, Sjogren's syndrome, dacryocystitis

Eyelid gland ducts

visual separation conflict

dry eyes, Sjogren's syndrome

Conjunctiva

Lens

Cornea

visual separation conflict

conjunctivitis, pterygium, pinguecula, grey cataract, keratitis, astigmatism, farsightedness, nearsightedness

Nasal mucosa

scent conflict, stink conflict

common cold, nose bleeds, hay fever

Paranasal sinuses

scent conflict, stink conflict

sinusitis

Larynx mucosa

scare-fright conflict or territorial fear conflict

laryngitis, larynx cancer, vocal cord polyps

Bronchial mucosa

territorial fear conflict or scare-fright conflict

bronchitis, pneumonia, influenza, atelectasis, bronchial cancer

Trachea
not getting enough air
tracheitis, tracheal cancer
Pharyngeal ducts
frontal-fear conflict or powerless conflict
non-Hodgkin's lymphoma, small cell bronchial carcinoma, mononucleosis, Pfeiffer's disease
Mouth and pharynx surface mucosa
oral conflict
aphthous ulcers, oral cancer, gingivitis, gum abscess
Throat
not wanting to swallow a morsel
sore throat, strep throat
Salivary gland ducts
not being able or allowed to eat
parotitis, Sjogren's syndrome
Thyroid ducts
powerless conflict or frontal-fear conflict
euthyroid struma, thyroid cyst, thyroglossal cysts, thyroid fistula
Esophagus (upper two-thirds)
not wanting to swallow a morsel
esophageal cancer
Stomach (small curvature) Pylorus Duodenal bulb
territorial anger conflict or identity conflict
stomach ulcers, pyloric ulcers, duodenal ulcers, gastric reflux, gastritis
Bile ducts Gallbladder
territorial anger conflict or identity conflict
jaundice, hepatitis, hepatomegaly, liver cirrhosis, liver cancer, cholecystitis, gallstones
Pancreatic ducts
territorial anger conflict or identity conflict
pancreatitis, pancreatic cancer
Rectum surface mucosa
identity conflict or territorial anger conflict, decision conflict
hemorrhoids
Perianal ducts
not being able to eliminate feces fast enough
perianal cyst, perianal fistula
Renal pelvis Ureters
territorial marking conflict
kidney infection, pyelitis, kidney stones
Bladder Urethra
territorial marking conflict
urinary tract infection, cystitis, urethral gonorrhea, bladder warts, urothelial carcinoma
Prostatic ducts
territorial marking conflict
intraductal prostate cancer
Glans penis
separation conflict, penis conflict
penile hypersensitivity, penile hyposensitivity
Cervix uteri
sexual conflict, mating conflict
cervical cancer
Vaginal mucosa
sexual separation conflict
vaginal dryness, vaginal herpes, vaginal warts
Glans clitoris
separation conflict, clitoris conflict
clitoral hypersensitivity, clitoral hyposensitivity
Milk ducts
separation conflict
scirrhous knots, intraductal breast cancer, breast cyst, mastitis, Paget's disease
Epidermis
separation conflict
alopecia, vitiligo, albinism, dermatitis, eczema, hives, measles, rubella, chickenpox, scarlet fever, rosacea, lupus, herpes, psoriasis, warts, basalioma, scleroderma

Enamel

bite conflict (not being allowed to bite)

cavities

Coronary arteries

territorial loss conflict or sexual conflict

angina pectoris, arteriosclerosis, heart attack

Coronary veins

sexual conflict or territorial loss conflict

angina pectoris, lung embolism

Aorta, carotid arteries, subclavian arteries

territorial loss conflict or sexual conflict

carotid artery aneurysm, carotid artery stenosis, subclavian artery aneurysm

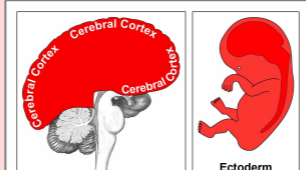
Carotid sinus

blood pressure is too high

carotid bifurcation atheroma

ORGANS CONTROLLED FROM THE CEREBRAL CORTEX

with functional changes or functional loss



ORGAN

BIOLOGICAL CONFLICT

MEDICAL CONDITIONS

Retina

fear that cannot be shaken off

nearsightedness, farsightedness, scotoma, retinal detachment, macular degeneration

Vitreous body

fear of a predator

green cataract, glaucoma

Cochlea (inner ear)

hearing conflict

tinnitus, hearing impairment

Vestibular organ (inner ear)

balance conflict, falling conflict

vertigo, ataxia, Meniere's disease

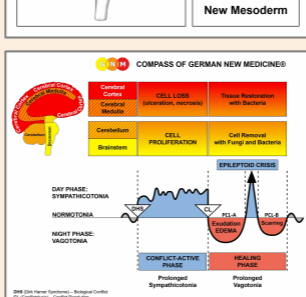
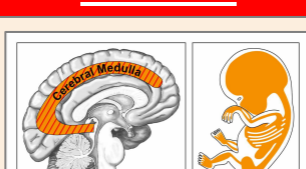
Periosteum

severe separation conflict

rheumatism, trigeminal neuralgia, numbness, foot ulcers, leg ulcers, Raynaud's disease, gangrene

ORGANS CONTROLLED FROM THE CEREBRAL MEDULLA

AND FROM THE MOTOR CORTEX



ORGAN

BIOLOGICAL CONFLICT

MEDICAL CONDITIONS

Eyelid muscles

Levator palpebrae: not being able to keep the eyes open

Orbicularis oculi: not being able to close the eyes

blepharoptosis, lagophthalmos, blepharospasm

ectropion, entropion

Ciliary muscles (striated)

not being able to see what is in the distance

farsightedness

Extraocular muscles

not wanting to look in a certain direction

strabismus, nystagmus, lazy eye

Stapedius muscle

noise conflict

hyperacusis, stapedial muscle spasms

Laryngeal muscles

scare-fright conflict or territorial fear conflict

whooping cough, spastic laryngitis, laryngeal asthma

Bronchial muscles

territorial fear conflict or scare-fright conflict

whooping cough, spastic bronchitis, bronchial asthma

Diaphragm

not being able to breathe sufficiently, physical overwhelmed conflict

diaphragmatic hernia, hiatal hernia

Tongue muscles

not being able to pull the tongue away

tongue muscle paralysis

Esophageal muscles

not being able to regurgitate a morsel

esophageal spasms

Rectal muscles (lower rectum)**External anal sphincter**

not being able to sufficiently mark one's territory

fecal incontinence, rectal spasms

Bladder muscle**External bladder sphincter**

not being able to sufficiently mark one's place

urinary incontinence, bladder spasms, bedwetting

Cervical muscles**Cervical sphincter**

not being able to sufficiently hold the fetus

cervical spasms

Vaginal muscles

not being able to hold the penis

vaginismus

Skeletal muscles

motor conflict of not being able to move, feeling stuck

paralysis, Bell's palsy, polio, ALS, multiple sclerosis, Guillain-Barré syndrome, epileptic seizure, focal dystonia, Parkinson's, tetanus, stroke

Jaw muscles

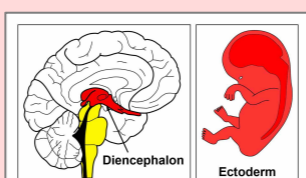
self-devaluation conflict

lockjaw, bruxism

Myocardium (ventricles)

overwhelmed conflict

cardiac insufficiency, myocarditis, myocardial sarcoma, ventricular fibrillation, myocardial heart attack, sleep apnea

ORGANS CONTROLLED FROM THE DIENCEPHALON with functional changes or functional loss**ORGAN****BIOLOGICAL CONFLICT****MEDICAL CONDITIONS****Thalamus**

complete self-abandonment

extreme restlessness, thalamic glioma

Olfactory nerves

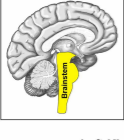
not being able to smell something or someone

hyposmia, anosmia, hyperosmia

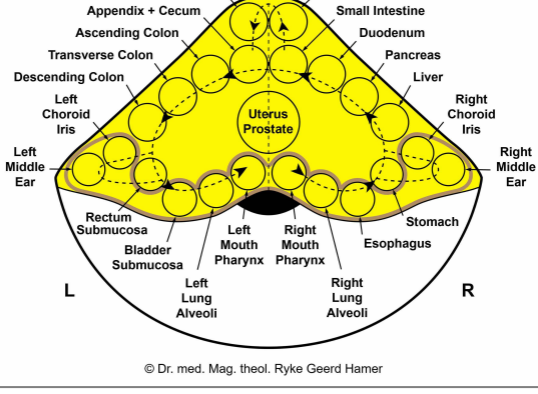
Islet cells (pancreas)

fear-disgust conflict or resistance conflict

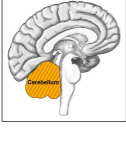
hypoglycemia, diabetes



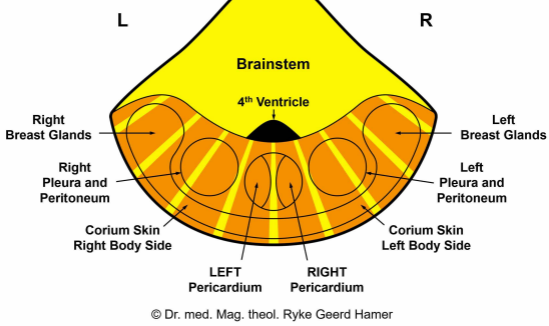
BRAINSTEM – ORGAN RELATION



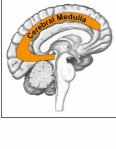
© Dr. med. Mag. theol. Ryke Geerd Hamer



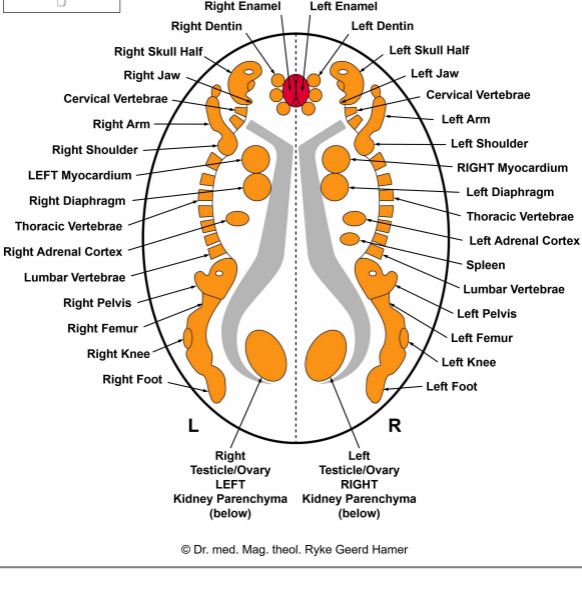
CEREBELLUM – ORGAN RELATION



© Dr. med. Mag. theol. Ryke Geerd Hamer

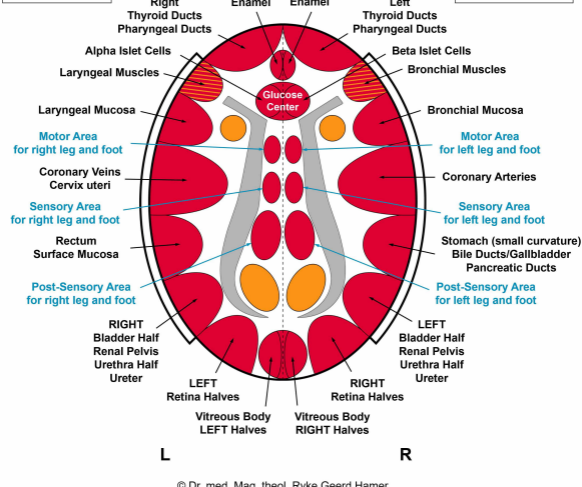
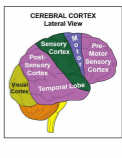
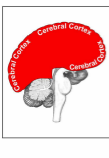


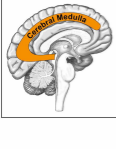
CEREBRAL MEDULLA – ORGAN RELATION



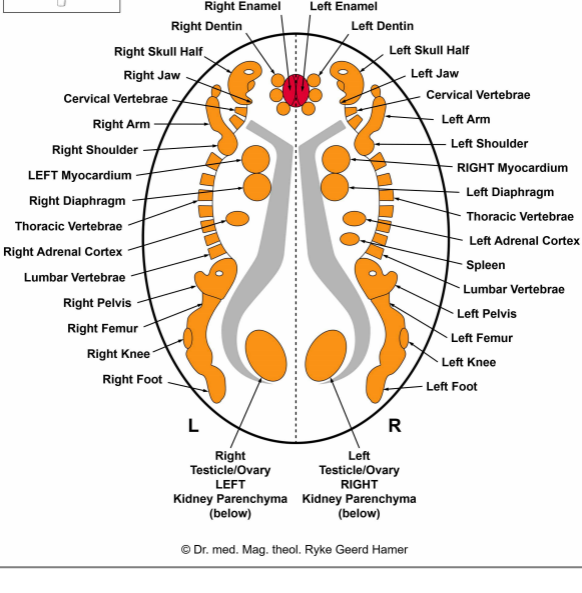
© Dr. med. Mag. theol. Ryke Geerd Hamer

CEREBRAL CORTEX – ORGAN RELATION





CEREBRAL MEDULLA – ORGAN RELATION



© Dr. med. Mag. theol. Ryke Geerd Hamer

CEREBRAL CORTEX

Lateral View

